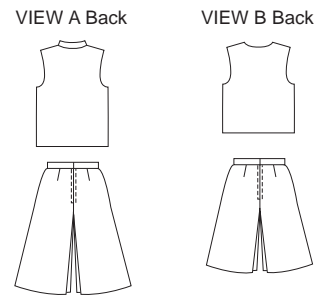


Misses' vests and culottes. Lined vest has hidden hook and eye closure. View A has stand-up collar, View B has V-neckline. Culottes in two lengths have inverted pleat at center front and center back, darts, back zipper and waistband with hook and eye closure.



KWIK•SEW®
3022 price

MISSES' VESTS & CULOTTES CULOTTES DESIGNED FOR MEDIUM WEIGHT WOVEN FABRICS
 Sizes: XS-S-M-L-XL Suggested Fabrics: Twill, gabardine, chino, flannel, denim
 VEST DESIGNED FOR FAKE FUR, BERBER FLEECE

Size	XS	S	M	L	XL	
Finished Length of Vest at Center Back						
View A	20 1/2 (52)	21 (53)	22 (55)	22 1/2 (57)	23 1/2 (59)	" (cm)
View B	18 (45)	18 1/4 (46)	18 3/4 (48)	19 1/4 (49)	19 3/4 (50)	" (cm)
Finished Inside Leg Seam						
View A	13 1/2 (34)	13 1/2 (34)	13 1/2 (34)	13 1/2 (34)	13 1/2 (34)	" (cm)
View B	8 (20)	8 (20)	8 (20)	8 (20)	8 (20)	" (cm)
Material Required: Fabric requirement allows for nap, one-way design or shading. Extra fabric may be needed to match design or for shrinkage.						
Fabric 60" (152 cm) Wide						
Culottes View A	1 5/8 (1.50)	1 3/4 (1.60)	1 3/4 (1.60)	1 7/8 (1.75)	1 7/8 (1.75)	yd (m)
View B	1 3/8 (1.30)	1 1/2 (1.40)	1 1/2 (1.40)	1 1/2 (1.40)	1 5/8 (1.50)	yd (m)
Vest Fabric & Lining Each						
View A	7/8 (0.80)	7/8 (0.80)	7/8 (0.80)	7/8 (0.80)	7/8 (0.80)	yd (m)
View B	5/8 (0.60)	5/8 (0.60)	3/4 (0.70)	3/4 (0.70)	3/4 (0.70)	yd (m)
Fabric 45" (115 cm) Wide						
Culottes View A	2 5/8 (2.40)	2 3/4 (2.55)	2 3/4 (2.55)	3 (2.75)	3 (2.75)	yd (m)
View B	2 1/8 (1.95)	2 1/4 (2.10)	2 1/4 (2.10)	2 1/2 (2.30)	2 1/2 (2.30)	yd (m)
Vest Fabric & Lining Each						
View A	7/8 (0.80)	7/8 (0.80)	1 1/8 (1.05)	1 3/8 (1.30)	1 1/2 (1.40)	yd (m)
View B	5/8 (0.60)	3/4 (0.70)	1 (0.95)	1 1/4 (1.15)	1 1/4 (1.15)	yd (m)
Fusible Interfacing 24" (60 cm) Wide						
Culottes View A & B	7/8 (0.80)	7/8 (0.80)	1 (0.95)	1 1/8 (1.05)	1 1/4 (1.15)	yd (m)
Vest View A	3/4 (0.70)	7/8 (0.80)	7/8 (0.80)	7/8 (0.80)	7/8 (0.80)	yd (m)
View B	5/8 (0.60)	5/8 (0.60)	5/8 (0.60)	5/8 (0.60)	3/4 (0.70)	yd (m)
Notions: Thread. Culottes: One zipper 6" (15 cm) for size XS; 7" (18 cm) for sizes S - M - L - XL, one hook and eye. Vest: hook and eye.						